



NEWINGTON
LONDON

3 Bedrooms

Apartment

Located in London

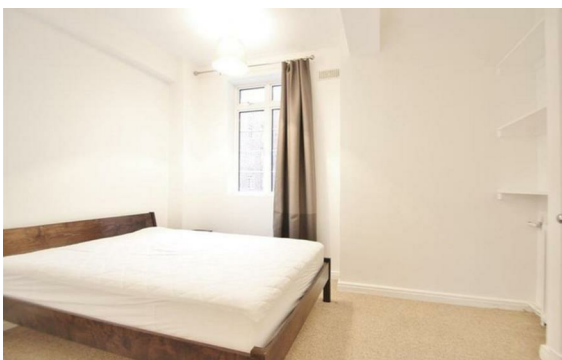
£1,130 (From) Per



info@newingtonstates.com

<http://www.newingtonstates.com>

020 7724 2233



NEWINGTON LONDON

60 Upper Montagu Street

London

W1H 1SN

020 7724 2233

info@newingtonestates.com

Newington Estates are delighted to present you this three bedroom two bathroom apartment in a popular portered building in the heart of Marylebone. This property offers you a good size bright reception, three double bedrooms with built in wardrobes giving ample storage, separate fully fitted kitchen, a dining room, and two modern bathrooms. The property benefits from lift access & portorage.

Set within this portered block with a lift, situated very near to both Marylebone & Baker Street Tube Stations and all amenities of Marylebone. EPC RATING: C

Energy Efficiency Rating: C

Agents Note: Whilst every care has been taken to prepare these particulars, they are for guidance purposes only. All measurements are approximate and are for general guidance purposes only and whilst every care has been taken to ensure their accuracy, they should not be relied upon and potential buyers/tenants are advised to recheck the measurements.

<http://www.newingtonestates.com>